



# District 8 Annual Utility Information

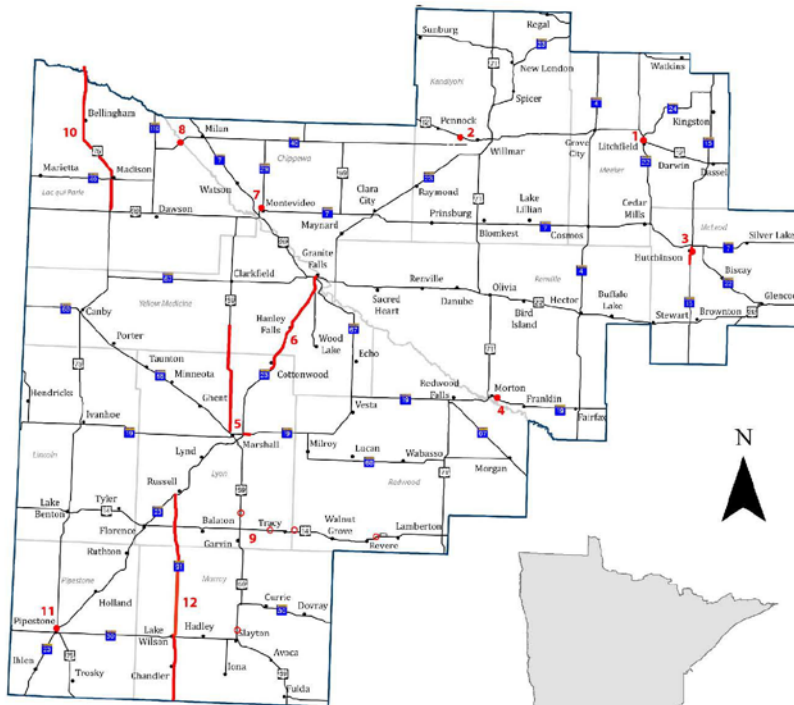
# Project Manager contacts

Name	Email	Phone
PhillipDeSchepper, District 8 Utility Engineer	<a href="mailto:phillip.deschepper@state.mn.us">phillip.deschepper@state.mn.us</a>	320-214-6356
Ryan Barney	<a href="mailto:ryan.barney@state.mn.us">ryan.barney@state.mn.us</a>	320-214-6324
Gene East	<a href="mailto:gene.east@state.mn.us">gene.east@state.mn.us</a>	320-214-6331
Lance Kalthoff	<a href="mailto:lance.kalthoff@state.mn.us">lance.kalthoff@state.mn.us</a>	320-214-6352
Isaac Kinuthia	<a href="mailto:isaac.kinuthia@state.mn.us">isaac.kinuthia@state.mn.us</a>	320-214-6353
Mark Klema	<a href="mailto:mark.klema@state.mn.us">mark.klema@state.mn.us</a>	320-212-0830
Kent Medalen	<a href="mailto:kent.medalen@state.mn.us">kent.medalen@state.mn.us</a>	320-214-6326
Ron Mortensen	<a href="mailto:ronald.mortensen@state.mn.us">ronald.mortensen@state.mn.us</a>	320-214-6399
Chris Nienaber	<a href="mailto:christopher.nienaber@state.mn.us">christopher.nienaber@state.mn.us</a>	320-214-6322
Nathan Pederson	<a href="mailto:nathan.pederson@state.mn.us">nathan.pederson@state.mn.us</a>	320-214-6351
Jesse Vlaminck	<a href="mailto:jesse.vlaminck@state.mn.us">jesse.vlaminck@state.mn.us</a>	320-212-0206
Alex Wenigner	<a href="mailto:alex.wenigner@state.mn.us">alex.wenigner@state.mn.us</a>	320-214-6326

# 2020 construction projects



## 2020 District 8 Construction Projects



**MnDOT District 8 Headquarters**  
 2505 Transportation Road, Willmar MN 56201  
 320-231-5195 / 800-657-3792  
[www.dot.state.mn.us/D8/projects](http://www.dot.state.mn.us/D8/projects)  
[www.facebook.com/groups/MnDOTsouthwest/](https://www.facebook.com/groups/MnDOTsouthwest/)



Updated 09-17-20

**#1—US Hwy 12 and Hwy 22—DETOUR (2-year project: 2019-2020)**  
 In Litchfield, reconstruct US 12 from 4th St. to E. Commercial St., and from the intersection of US 12/Hwy 22 to N. Holcombe Ave., and, reconstruct N. Holcombe Ave. from US 12 to E. 1st Ave. Upgrade sidewalks and pedestrian crossings along the project area.

**#2—US Hwy 12 and Hwy 40—DETOUR (2-year project: 2019-2020)**  
 Realign US Hwy 12 and reconstruct Hwy 40, including two new bridges, to facilitate a new railroad line (Willmar Wye) on the west side of Willmar.

**#3—Hwy 15—DETOUR**  
 Reconstruct Hwy 15 in Hutchinson from 2nd Ave. to 5th Ave. S. and resurface Hwy 15 from 5th Ave. S. to just north of the roundabout at CR 115. Upgrade sidewalks and pedestrian crossings along the project area.

**#4—Hwy 19—DETOUR**  
 Slope repair and stabilization of road embankment on Hwy 19 east of Morton.

**#5—Hwy 19 and US Hwy 59**  
 In Marshall, resurface Hwy 19 from the junction of Hwy 19/23 to just west of 280th Ave., and resurface US 59 from north of Lyon CR 33 to south of Yellow Medicine CR 3.

**#6—Hwy 23—DETOUR**  
 Resurface Hwy 23 from Cottonwood to Granite Falls. Replace metal pipes with box culverts. realign Lyon CR 9 and construct five left-turn lanes. Update intersection of Hwy 23 and US Hwy 212 to meet ADA standards.

**#7—Hwy 29—DETOUR**  
 Replace the bridge on Hwy 29 over N. Parkway Dr. in Monteideo.

**#8—Hwy 40—DETOUR (Carryover from 2019)**  
 Replace the bridge on Hwy 40 (known as the Milan Bridge) over Lac qui Parle Lake west of Milan.

**#9—US Hwy 59 and US Hwy 14**  
 Slope repair and stabilization of road embankment at two locations on US 59 and three locations on US 14 in Redwood, Lyon and Murray counties. (Locations are marked with open red circles.)

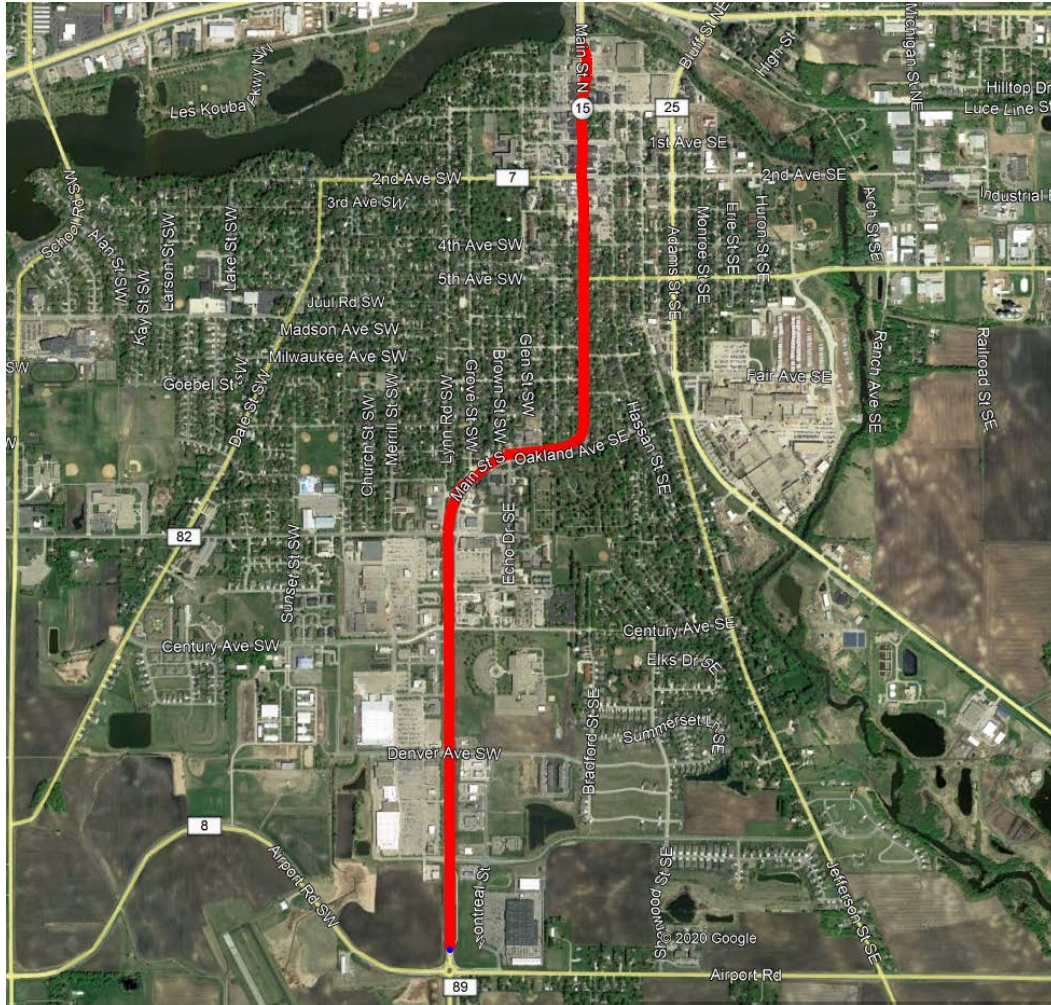
**#10—US Hwy 75—DETOUR**  
 Resurface 22 miles of US 75 from Twp Road 127 (just north of US Hwy 212) to Hwy 7. Line culverts; upgrade sidewalks and pedestrian crossings in Bellingham. Start date to be determined, no later than May 17, 2021.

**#11—US Hwy 75—DETOUR**  
 Replace the bridge on US 75 over Pipestone Creek in Pipestone.

**#12—Hwy 91—DETOUR (2-year project: 2019-2020)**  
 Resurface Hwy 91 from Ncbles/Murray County line to Russell. Replace bridges and repair culverts along project area. Upgrade sidewalks in Lake Wilson. District 7 is the lead.



# 2020 projects – Hwy 15 Hutchinson



## Project details

- Reconstruct Hwy 15 from 2<sup>nd</sup> Ave NW to 5<sup>th</sup> Ave SW
- Resurface Hwy 15 from 5<sup>th</sup> Ave SW (end of reconstruction) to just north of the roundabout at Airport Rd
- Replace sidewalks and update pedestrian crossings
- [Click here to visit the project webpage](#)

Gene East, Project Manager  
[gene.east@state.mn.us](mailto:gene.east@state.mn.us)  
320-214-6331

# 2020 projects – Hwy 23 Cottonwood to Granite Falls

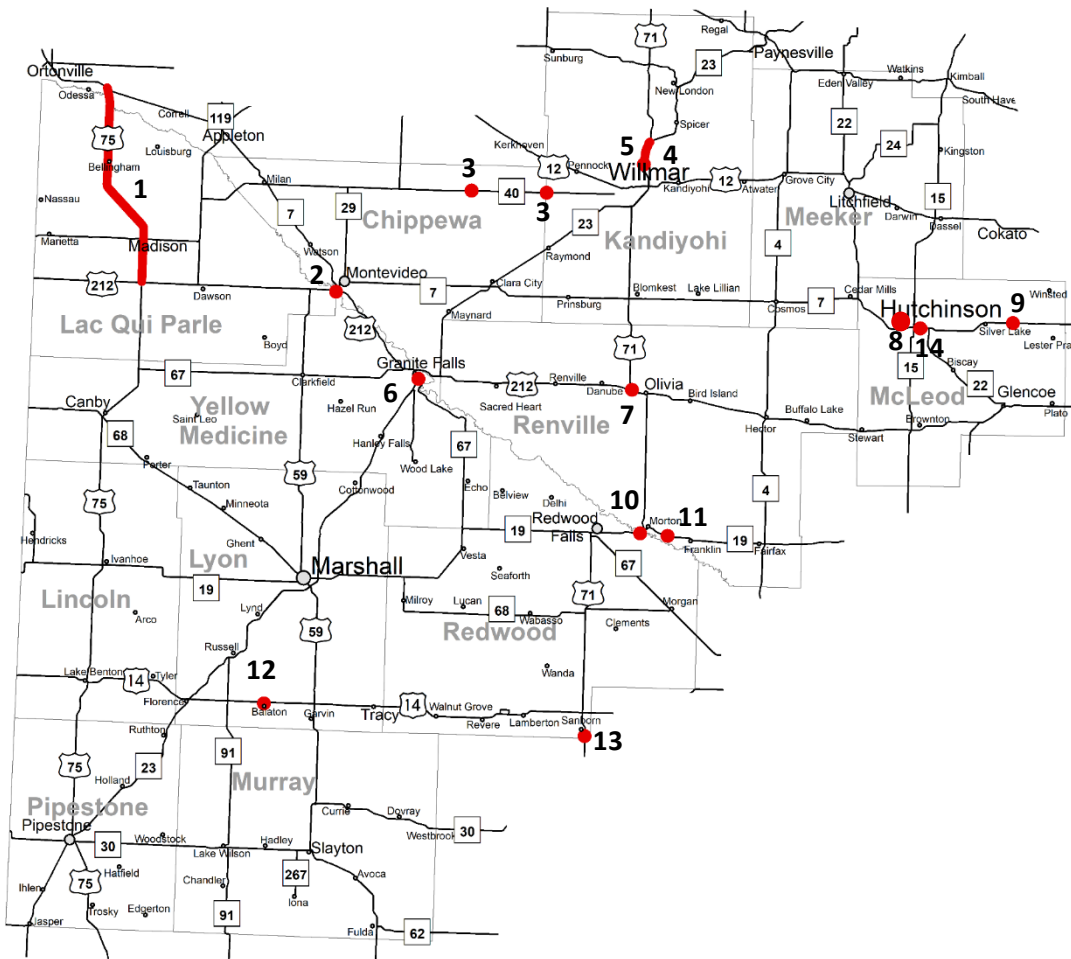


## Project details

- Resurface (concrete) Hwy 23 from Cottonwood to the junction of US 212 in Granite Falls
- Project also includes construction of turn lanes, three bridge replacements and ADA upgrades
- [Click here to visit the project webpage](#)

Lance Kalthoff, Project Manager  
[lance.kalthoff@state.mn.us](mailto:lance.kalthoff@state.mn.us)  
320-214-6352

# 2021 construction projects



1. US 75 – CIR & overlay from US 212 to MN 7, except in Madison. ADA & RR crossing in Bellingham, culvert liners & guardrail
2. US 212 – Intersection overhead lighting at Yellow Medicine CSAH 19 and Hwy 212
3. MN 40 – Replace bridge 91681 over a County ditch in Kandiyohi Co. & bridge 6864 over a County ditch in Chippewa Co.
4. US 71 – Reduced conflict intersection at Kandiyohi CR 90 and U-turn and sidewalk at CSAH 24 in Wilmar
5. US 71/MN 23 – Concrete pavement rehab and diamond grinding from the N side of Wilmar to the Hwy 71/23 split
6. US 212 – Scenic overlook improvements
7. US 71 – Replace TCWR RR crossing with new gates and flashing lights on Hwy 71 N in Olvia
8. MN 7 – Sidewalk and trail improvements along Hwy 7 and Hwy 15 in Hutchinson
9. MN 7 - Intersection overhead lighting at McLeod CSAH 15 and Hwy 7
10. MN 19 – Remove bridge 4667 over Sulfur Lake 4 miles SW of Morton
11. MN 19 – Drainage repair 1.3 miles to 1.7 miles SE of Morton
12. US 14 – Erosion repair and slope stabilization in Balaton near Lake Yankton
13. US 71 – Replace bridge 5543 over the Cottonwood River 2.8 miles S of US 14 near Sanborn
14. MN 7/MN 22 – Install a HAWK signal



# 2021 projects – US 71/CR 90 J-turn

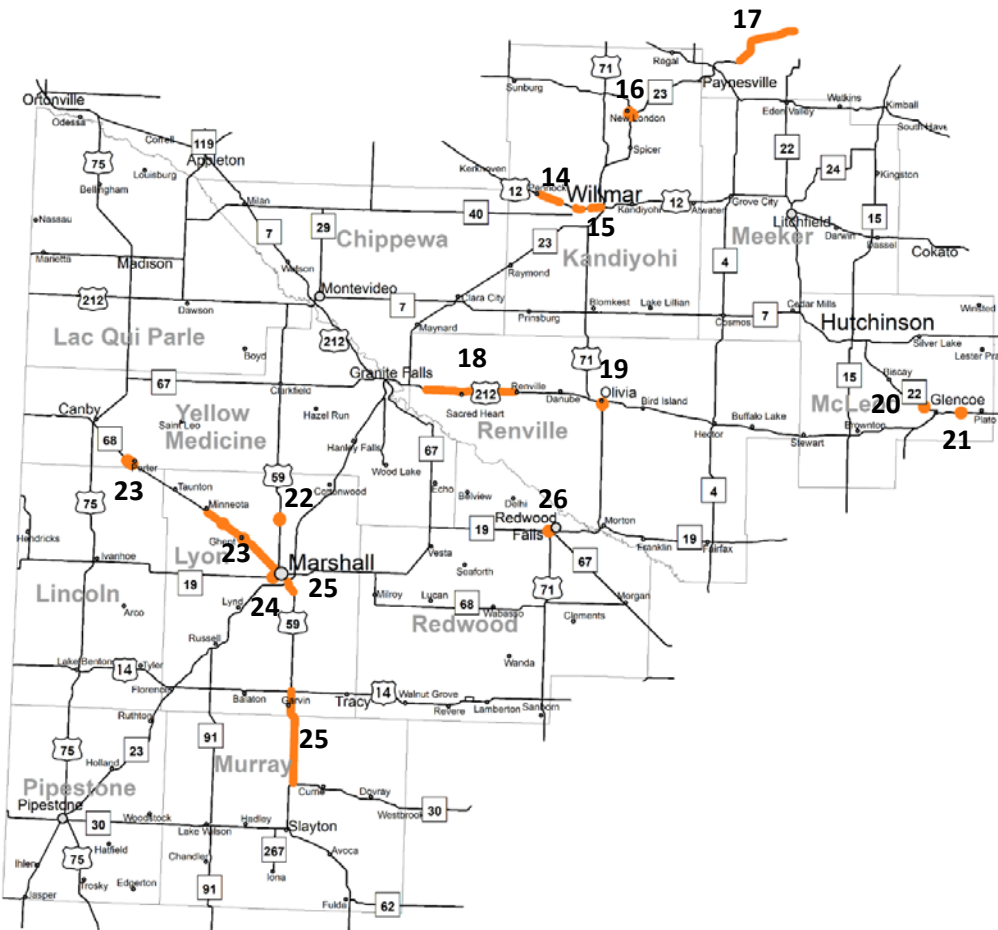


## Project details

- Construct J-turn at the intersection of US 71 & CR 90 in Willmar
- Concrete repair work on the southbound lanes of US 71 from Point Lake to the US 71/Hwy 23 “split”
- [Click here to visit the project webpage](#)

Mark Klema, Project Manager  
[mark.klema@state.mn.us](mailto:mark.klema@state.mn.us)  
320-214-0830

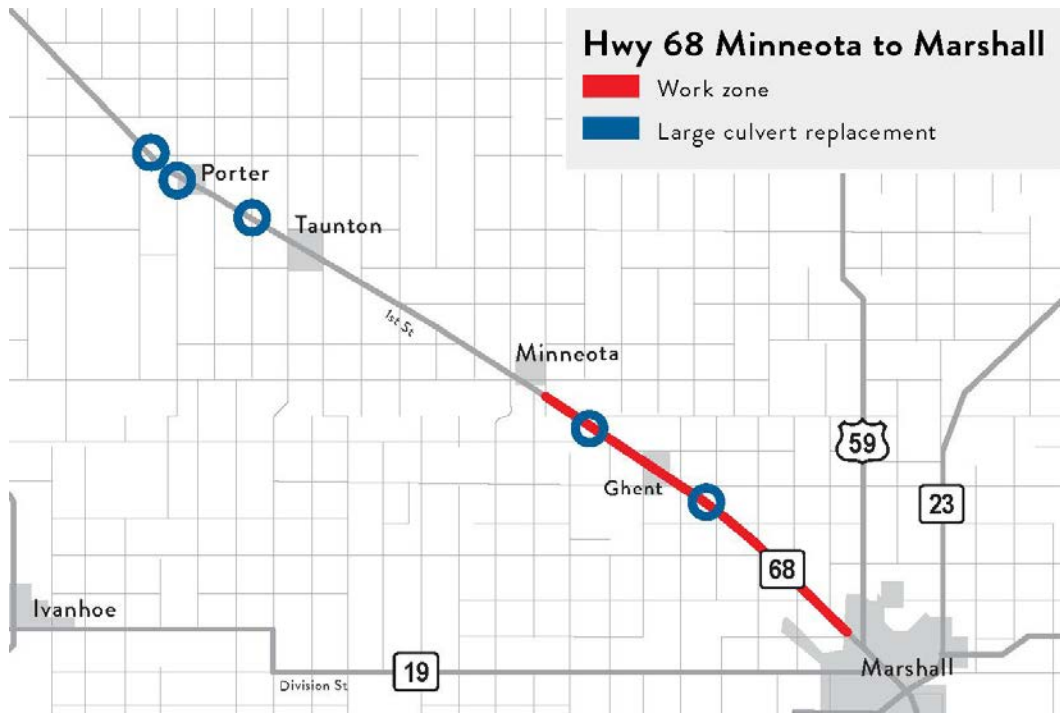
# 2022 construction projects



14. US 12 – Medium mill and overlay from just E of Kandiyohi CSAH 1 in Pennock to just E of Kandiyohi CSAH 5 in Willmar
15. US 12 – Medium mill and overlay from 6<sup>th</sup> St. to 24<sup>th</sup> St. in Willmar
16. MN 23/MN 9 – Construct a reduced conflict intersection (J-turn) at MN 23 and MN 9 in New London; install mid-block crossing at NLS High School in New London with median refuge island and repair retaining wall near Mill Pond
17. MN 23 – Construct a four-lane roadway from Paynesville to Richmond (North Gap)
18. US 212 - Un-bonded concrete overlay 2.3 miles E of MN 23 to Renville & urban recon. in Sacred Heart
19. US 71 – Medium mill and overlay from Viking Dr. to US 212 in Olivia plus ADA
20. US 212 – Construct a reduced conflict intersection (J-turn) at US 212 and Chandler Ave. in Glencoe
21. US 212 – Construct a reduced conflict intersection (J-turn) at intersection of McLeod CSAH 1
22. US 59 – Replace bridges 8886 and 8887 over a stream and ditch crossing 5.6 miles north of Marshall
23. MN 68 – Shoulder widening from Minneota to Marshall, replace 4 bridges and culverts. Hot-in-place recycle and ultra thin bonded wearing course from Minneota to Marshall
24. MN 19 – Railroad crossing upgrade west of Marshall
25. US 59 – Major CPR & diamond grinding, plus reclaim shoulders from near MN 30 to US 14 and just north of Lyon CSAH 6 to MN 23
26. MN 19 – Scarify and low slump overlay on bridge 5133 over the Redwood River W. of the junction of US 71



# 2022 projects – Hwy 68 Minneota to Marshall



## Project details

- Widen shoulders and replace culverts on Hwy 68 from N Grant St. in Minneota to Marshall
- Three culvert replacements near Porter area also included
- [Click here to visit the project webpage](#)

Chris Nienaber, Project Manager  
[christopher.nienaber@state.mn.us](mailto:christopher.nienaber@state.mn.us)  
320-214-6322

# 2022 projects – US 212 Sacred Heart



## Project details

- Resurface US 212 from just east of the junction of Hwy 23 to the junction of CR 6 in Renville
- US 212 through the City of Sacred Heart will be reconstructed. Sidewalks, pedestrian ramps and adjacent driveways will be upgraded to meet ADA standards.
- A passing lane between Granite Falls and Sacred Heart is also part of the project

Ron Mortensen, Project Manager

[ronald.mortensen@state.mn.us](mailto:ronald.mortensen@state.mn.us)

320-214-0830

# 2022 projects – Hwy 23 North Gap

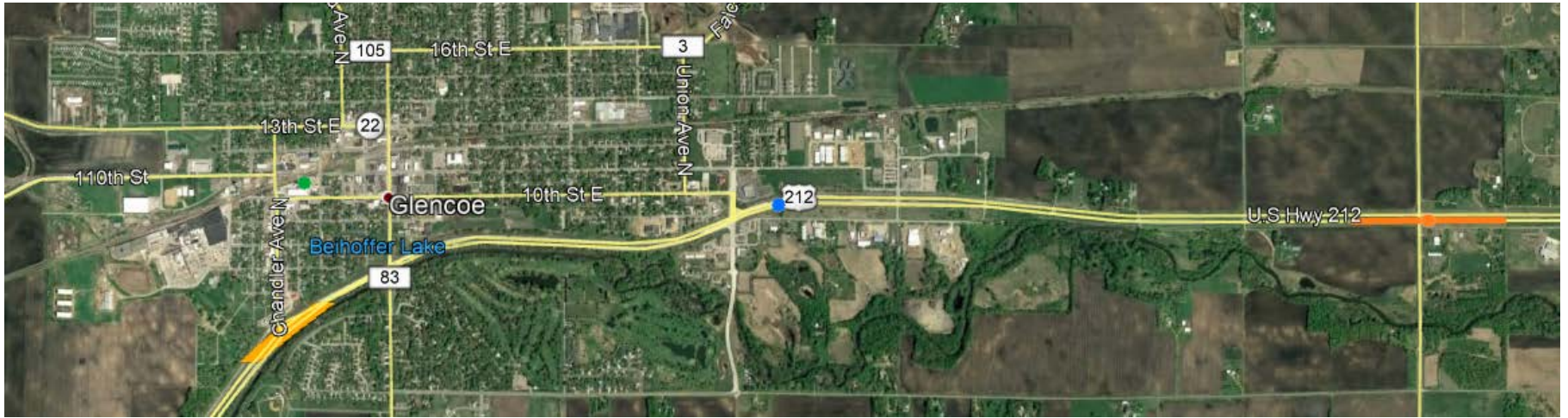


## Project details

- Expansion of Hwy 23 (two-lanes to four-lanes) from Paynesville to Richmond
- [Click here to visit the project webpage](#)

Lance Kalthoff, Project Manager  
[lance.kalthoff@state.mn.us](mailto:lance.kalthoff@state.mn.us)  
320-214-6352

# 2022 projects – US 212 Glencoe



## Project details

- Construct J-turn at the intersection of US 212 and CR 1
- A permanent snow fence and pedestrian improvements are also part of this project
- Construct partial J-turn at the intersection of US 212 and Hwy 22/Chandler Ave in Glencoe

Ron Mortensen, Project Manager

[ronald.mortensen@state.mn.us](mailto:ronald.mortensen@state.mn.us)

320-214-6399



# 2022 projects – Hwy 23 & Hwy 9

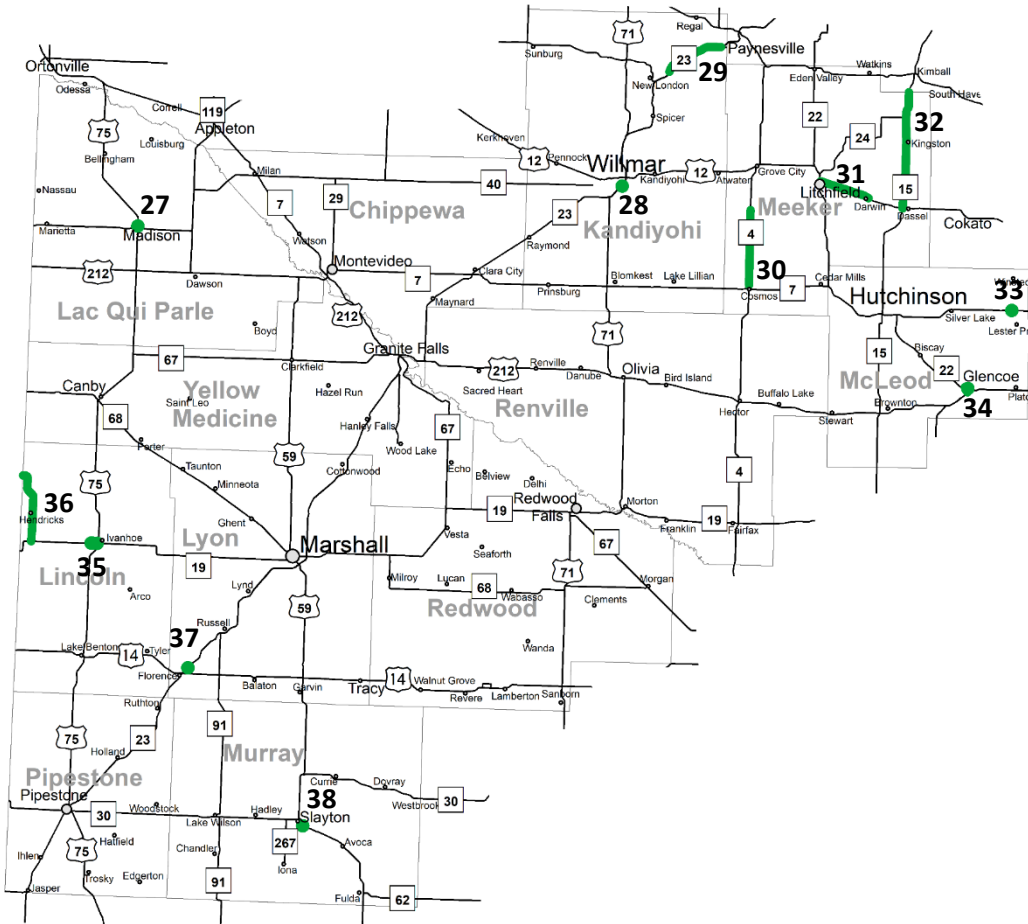


## Project details

- Construct J-turn at the intersection of Hwy 23 and Hwy 9 in New London
- Safety improvements along Hwy 9
- [Click here to visit the project webpage](#)

Mark Klema, Project Manager  
[mark.klema@state.mn.us](mailto:mark.klema@state.mn.us)  
320-212-0830

# 2023 construction projects



- 27. MN 40/US 75 – Medium mill and overlay plus ADA in Madison on MN 40 from the E jct. of US 75 to Western Ave and on US 75 from the N Jct. of MN 40 to 8<sup>th</sup> St.
- 28. US 23 – Construct on and off ramps for Kandiyohi CSAH 5
- 29. MN 23 – Construct a four-lane roadway from New London to Paynesville (South Gap)
- 30. MN 4 – Reclaim and overlay from Cosmos to ½ mile S of Meeker CSAH 23
- 31. US 12 – Medium mill and overlay, micro mill & UTBWC from Holcombe Ave. in Litchfield to just E of Meeker CSAH 14 in Darwin
- 32. MN 15 – Reclaim and overlay from Hwy 12 to the Meeker/Stearns County line
- 33. MN 7 – Construct roundabout at MN 7 and McLeod CSAH 1
- 34. MN 22 – Medium mill and overlay from US 212 to Cedar Ave. plus ADA in Glencoe
- 35. MN 19 – Replace bridges 826, 8736 and 8737 over the Yellow Medicine River W of US 75 near Ivanhoe
- 36. MN 271 – Reclaim and overlay from MN 19 to Railroad St. in Hendricks & thin mill and overlay from Maple St. in Hendricks to the state line
- 37. MN 23 – Replace bridge 5746 over the Redwood River approximately 1 mile E of Florence
- 38. US 59 – Construct bypass lanes in Slayton

# 2023 projects – Hwy 23 South Gap

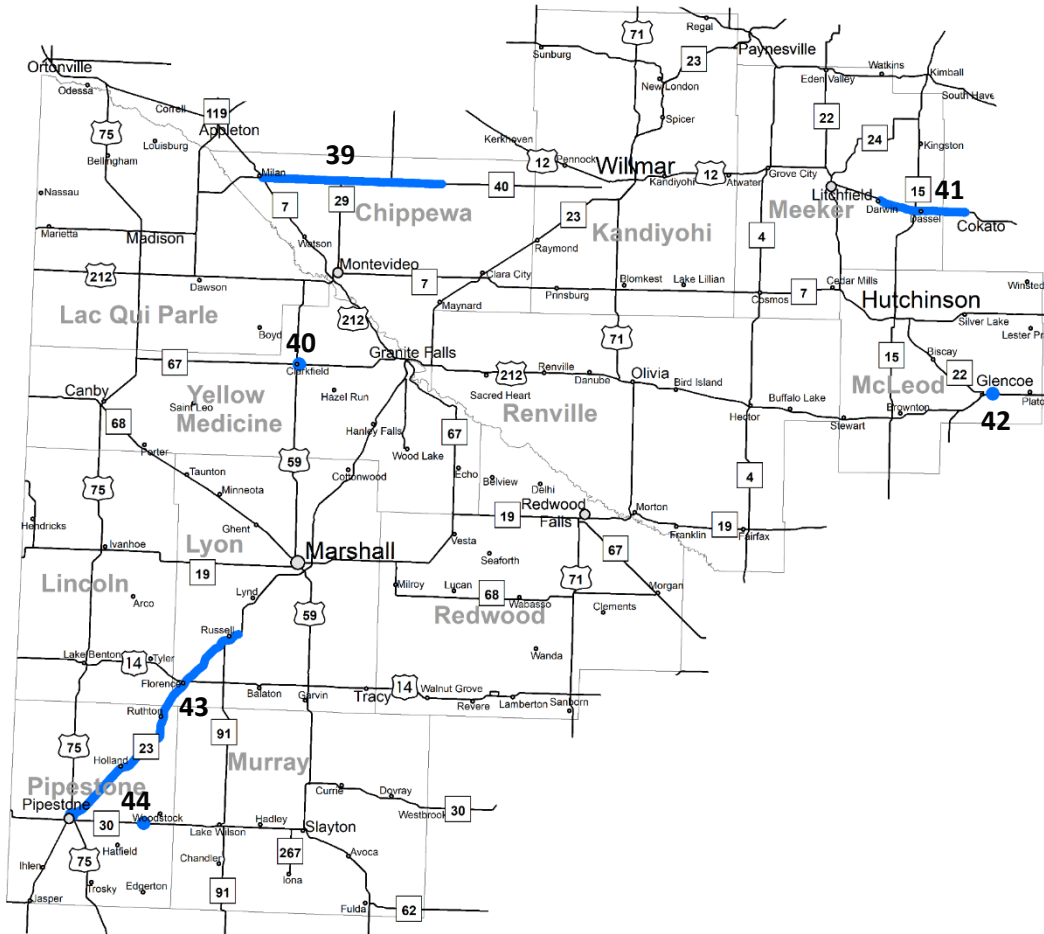


## Project details

- Expansion of Hwy 23 (two-lanes to four-lanes) from New London to Paynesville
- [Click here to visit the project webpage](#)

Chris Nienaber, Project Manager  
[christopher.nienaber@state.mn.us](mailto:christopher.nienaber@state.mn.us)  
320-214-6322

# 2024 construction projects



- 39. MN 29/MN 40 – Medium mill and overlay on MN 29 from Milan to the E jct. of MN 40 & on MN 40 from the E jct. of MN 29 to Chippewa CSAH 4
- 40. MN 67 – Reconstruction of MN 67 in downtown Clarkfield
- 41. US 12 – Major CPR and diamond grinding from E of CSAH 14 in Darwin to E of Pittman Ave in Cokato, plus ADA in Cokato
- 42. US 212 – Construct roundabout at US 212 and Morningside Drive in Glencoe
- 43. MN 23 – Medium mill & overlay from US 75 in Pipestone to nearly 2 miles N of MN 91, plus replace superstructure of bridge 59002
- 44. MN 30 – Replace bridges 4566 and 4468 over a stream crossing 3.5 miles W of the Pipestone/Murray County line



# 2024 projects – Clarkfield reconstruction



## Project details

- Reconstruction of Hwy 67 through Clarkfield. Project does not include the intersection of Hwy 59 and Hwy 67. Replacement of storm sewer is part of the project.
- Sidewalk and pedestrian ramp replacement is also part of the project.
- [Click here to visit the project webpage](#)

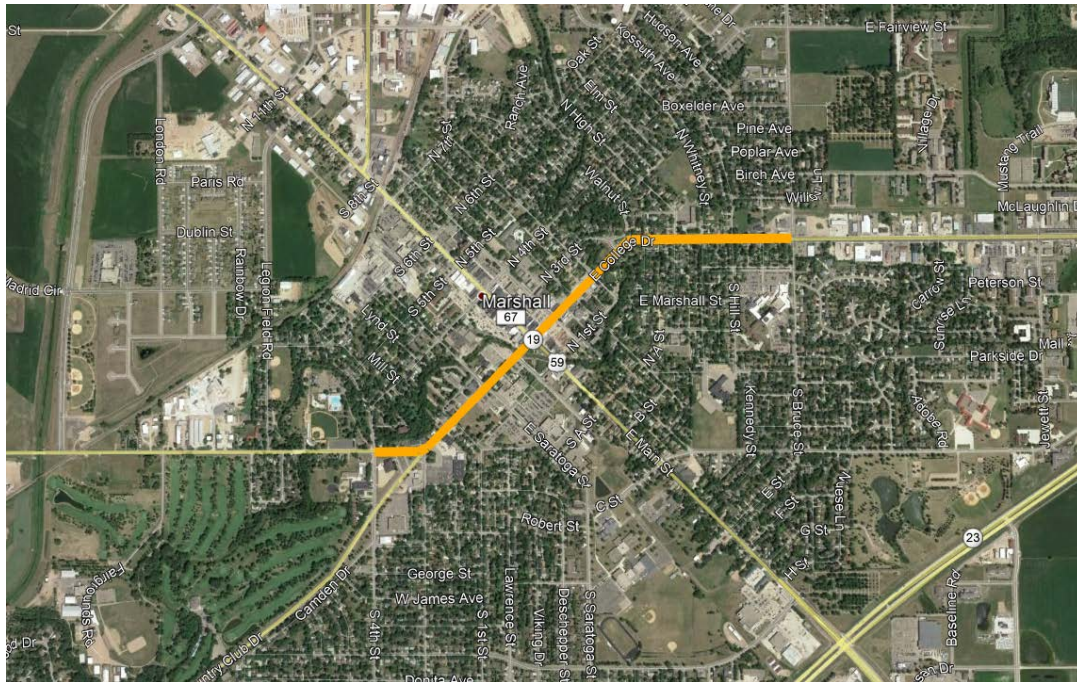
Lowell Flaten, Project Manager  
[lowell.flaten@state.mn.us](mailto:lowell.flaten@state.mn.us)  
320-214-6367

# Additional projects





# 2025 project – Marshall reconstruction



## Project details

- Reconstruction of Hwy 19/College Dr. through Marshall.
- Sidewalk and pedestrian improvements are also part of the project.
- Overall project details are not yet determined.
- [Click here to visit the project webpage](#)

Gene East, Project Manager

[gene.east@state.mn.us](mailto:gene.east@state.mn.us)

320-214-6331

Contact Phillip DeSchepper, District 8 Utility Engineer  
or  
any of the individual Project Managers.



# Thank you

**Phillip DeSchepper**

*[phillip.deschepper@state.mn.us](mailto:phillip.deschepper@state.mn.us)*

320-214-6356